

Paperpanzer.co.uk  
St. Charmond (Mk 1) French WW1 Tank

Printing Instructions

This model has been designed to be printed on an A4 sheet of 120 – 160gsm card. The main gun and its support can be difficult to roll into shape using card so would benefit from being printed on standard 80gsm paper.

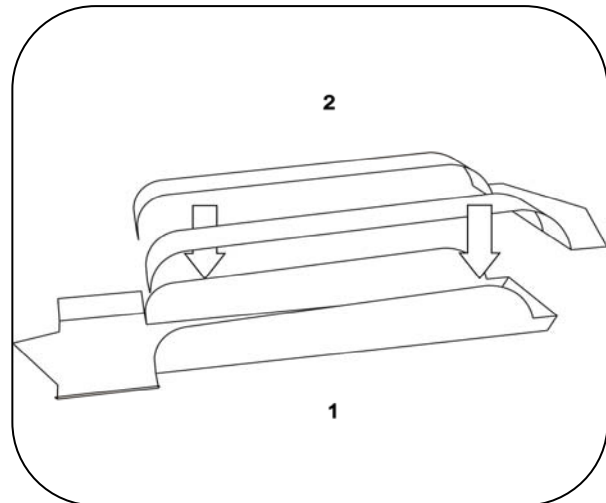
Tools Needed

Scissors or Sharp Model Knife  
PVA Glue  
Ruler, toothpick & Paper clip

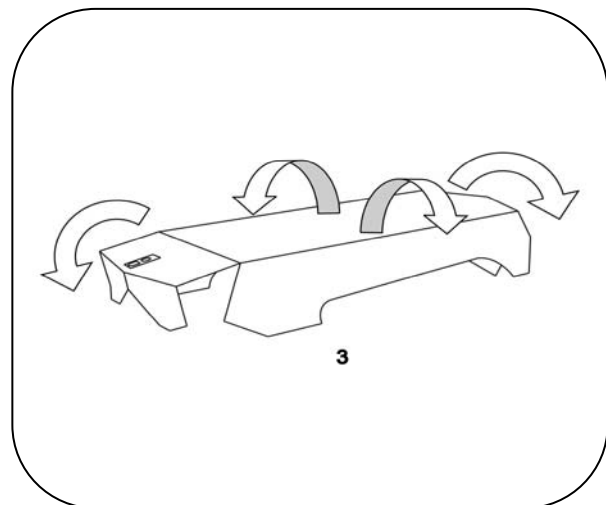
Model Construction



- 1, Cut out the chassis floor (part 1), score along dotted lines and form the sides, front and rear. Cut out the track wells (part 2) and curve the track wells to glue onto the sides of the chassis floor.

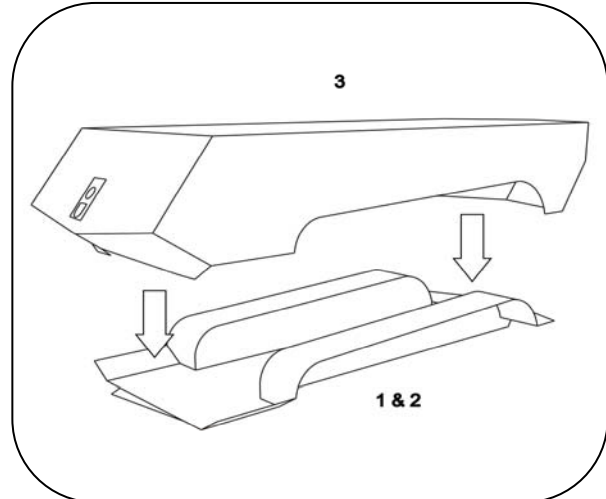


- 2, Cut out the main body (part 3) and score the dotted lines. The main body folds in from the front, back and both sides.

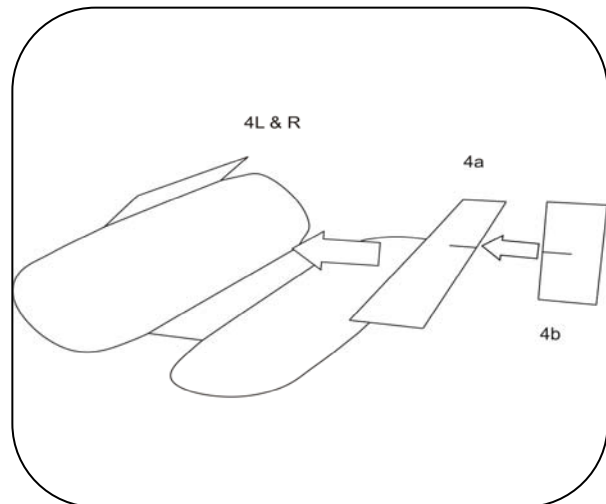


Paperpanzer.co.uk  
St. Charmond (Mk 1) French WW1 Tank

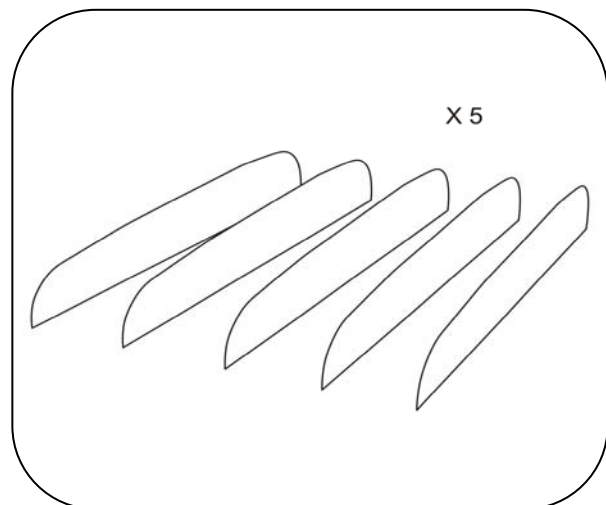
- 3, Once all parts are dry glue the main body (part 3) to the chassis floor and track well (parts 1 & 2).



- 4, Put the main body to one side and allow to dry. Cut out the running gear (parts 4L & 4R) score along dotted lines and fold into shape. Parts 4a & 4b are to be glued inside of the running gear to give extra support. Once dry the tracks (part 6) can be wrapped around the running gear.

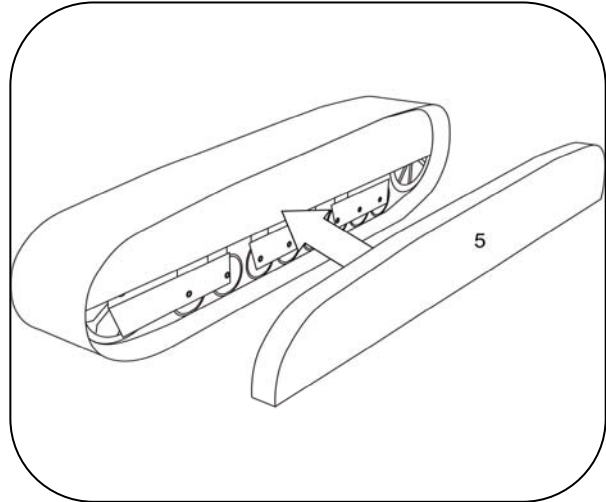


- 5, Part 5 is used to attach the running gear to the main body. This part needs to be laminated at least 5 times depending on the thickness of card being used.

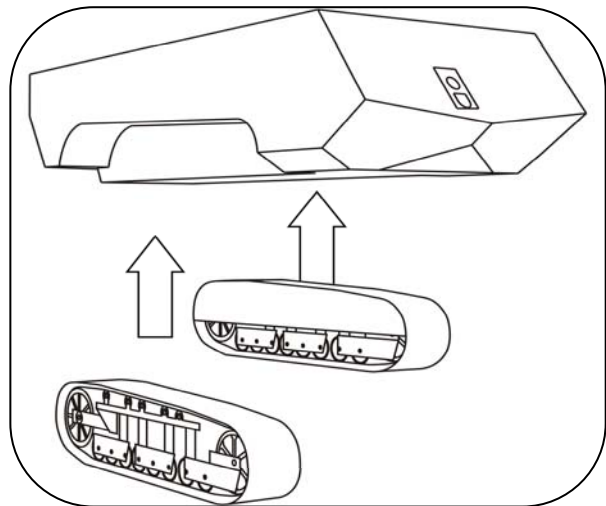


Paperpanzer.co.uk  
St. Charmond (Mk 1) French WW1 Tank

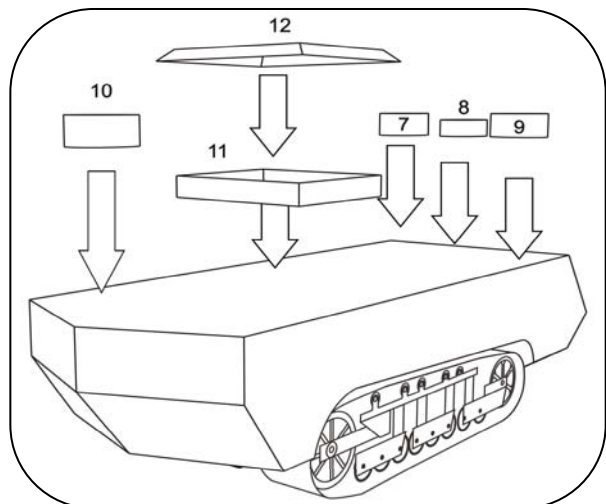
- 6, Once dry glue the track support on to the running gear.



- 7, And now attach both sets of running gear and track to the main body.



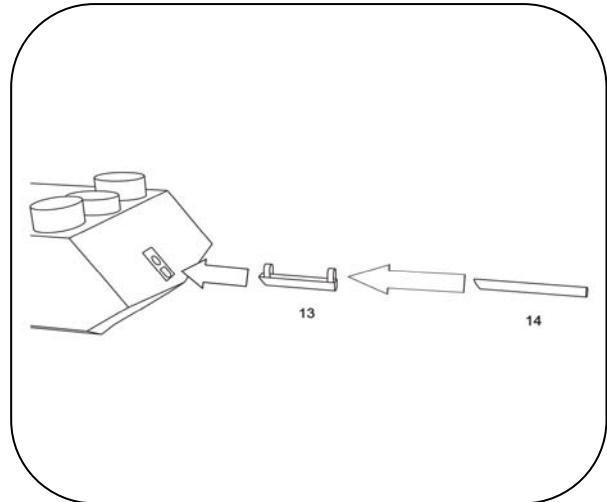
- 8, There are four kiosks (parts 7 – 10) all consist of two parts and are constructed in the same way. Cut out the wall of the kiosk and roll into shape, once dry cut out the kiosk roof and attach to the walls. When finished glue to the roof of the main body



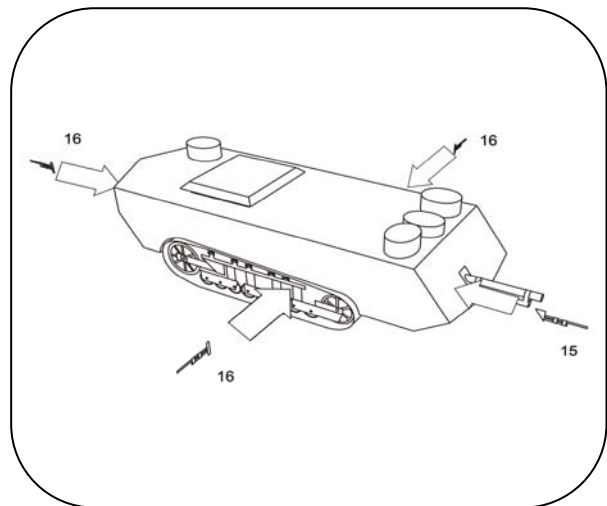
9. The ventilation cover is made from two parts, cut the wall (part 11) score along the dotted lines and form into a rectangle then attach to the roof of the main body. Cut out the roof and score along the dotted lines. The sides of the roof need to be folded in and glued where they meet in order to form the chamfered sides.

Paperpanzer.co.uk  
St. Charmond (Mk 1) French WW1 Tank

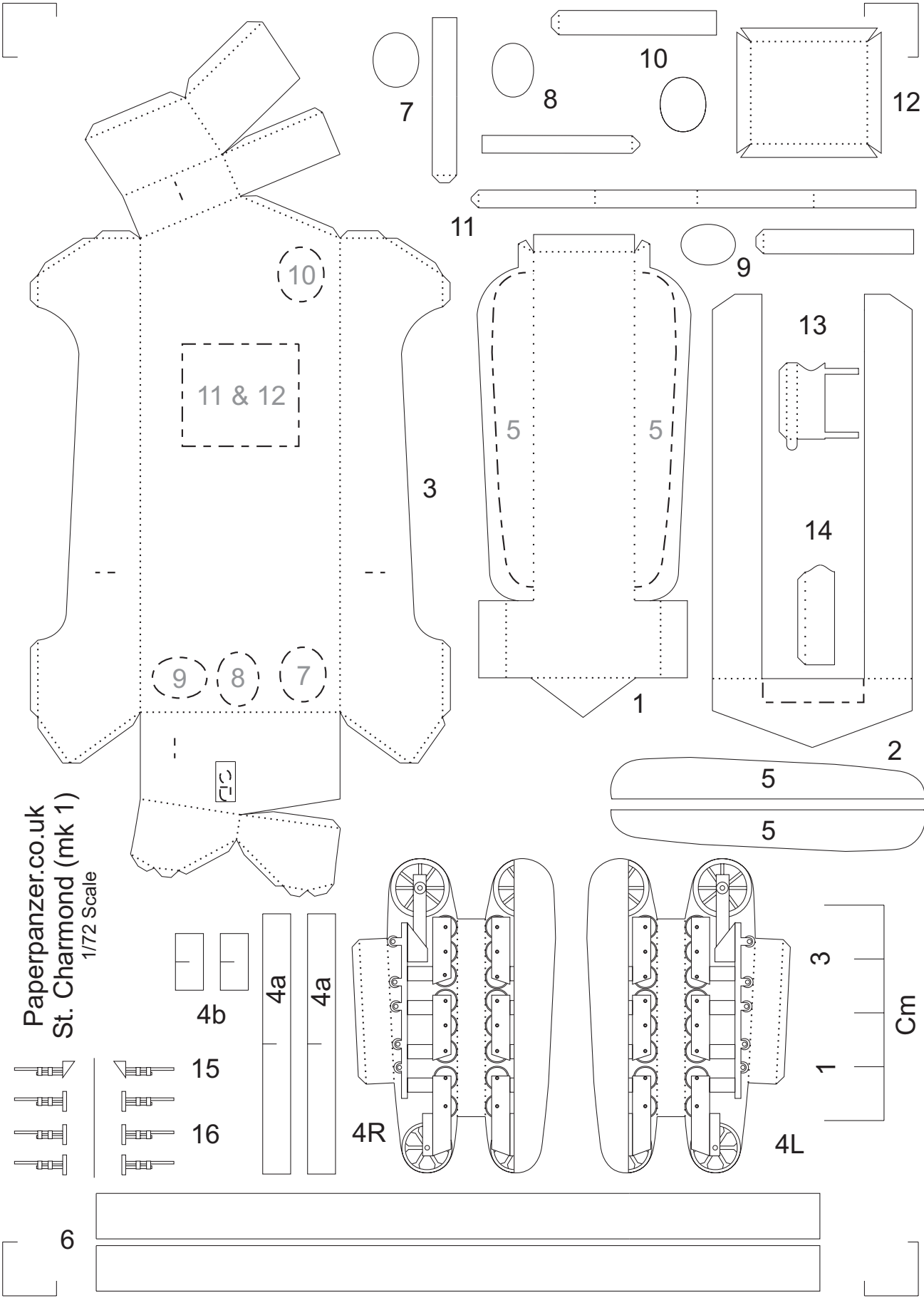
10. The main gun is made from two parts. Cut out the barrel support and form into a "U" shape and glue. The two straps on top of the barrel support should curve over to create a tunnel for the barrel to pass through. Once dry attach to the main body.
11. Cut out the barrel (part 14), form into a tube and glue. Once dry feed the barrel through the straps of the barrel support and glue to the main body.



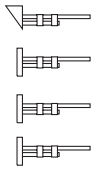
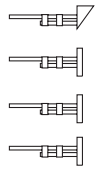
12. Finally the machine guns x4 (parts 15 & 16), roughly cut out first then fold and glue before cutting into shape. The front machine gun (part 15) is angled to fit all the other machine guns are flat.



Finished

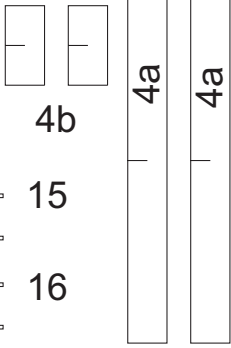


Paperpanzer.co.uk  
 St. Charmond (mk 1)  
 1/72 Scale



15

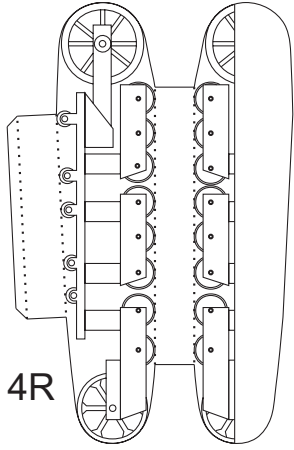
16



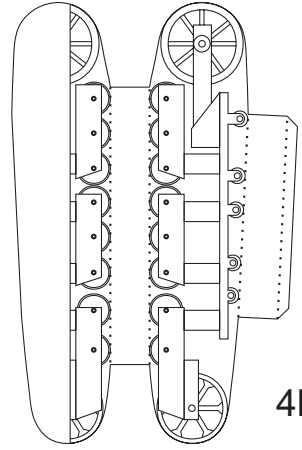
4b

4a

4a



4R



4L



3

1

Cm

6

